

(A division of Cethar Healthcare Services Limited)

C-108, Fort Station Road, Thillai Nagar, Trichy - 620 018. Tamil Nadu. India.
www.cetharhospitals.com

CETHAR HOSPITALS

(A division of Cethar Health Care Services Private Limited)

Enhancing life by redefining healthcare



Features

CETHAR group with three decades of experience in power sector is entering into health care business with chain of Super Specialty hospitals in India. Health care business is one of the identified businesses of Cethar group. "H" in CETHAR denotes Health Care. The state-of-art SUPER SPECIALTY HOSPITAL at Trichy on the Dindigul Road will be functioning from January 2015. Till then to provide specialty care in the field of **Gastroenterology and Women and Child care** now we are starting a 30 bedded hospital at **C-108, Fort Station Road, Thillai Nagar, Trichy.**

Facilities

Hospital has an efficiently planned infrastructure comprising of 5 outpatient clinics, state of the art diagnostics, 2 Operation Theatres, 8 critical care beds with comfortable In-Patient Rooms. The Operation Theatre complex is designed as Modular with Laminar air flow as per the highest international standards and is equipped with the most modern equipments. Hospital is well supported by the best infrastructure with pneumatic tube system, centralized HVAC, Purified water system, PACS, Telemedicine, Hi-tech health care IT infrastructure, Electronic Medical Records, Track and trace system using RFID, Mobile patient lifters and fully covered Wi-Fi Zone.

Specialties

CETHAR HOSPITALS will have services in following Specialties and Super Specialties at present

- Surgical gastroenterology, laser and laparoscopic surgery
- Liver and pancreatic surgery
- Obesity surgery
- Liver transplantation
- Medical gastroenterology, GI bleed Centre
- ERCP and endoscopic surgery
- Gynecology and obstetrics, assisted reproduction, foetal medicine
- Pediatrics and neonatology
- Anesthesiology and critical care
- Interventional radiology, surgical oncology





Equipments

CETHAR Hospital is equipped with the state of art equipments and cutting edge technology in both Diagnostics and Therapeutics

- Ultrasound- 4D Color Doppler System voluson S6
- Echo- High Performance Echocardiography System Vivid S5
- Digital X-rays with Fluoroscopy -Siemens Fluorovision 3000
- C-Arm - Philips BV Pulsera
- Diagnostic & Therapeutic Endoscopes-Olympus High Definition
- Laparoscopy - Olympus Endo eye High Definition
- Dialysis Machines - B Braun
- Ventilators-Maquet servo I , GE Engstrom
- Electro Surgery Unit with APC - ERBE
- Water jet/CUSA for liver Surgery
- Laser surgery - Ndyag
- Radio frequency ablation
- Gas Anesthesia ventilator system-GE aspire 7900
- Neonatal - GE Giraffe Incubators
- Fully Automatic Analyzers -Olympus open source
- Hematology -ABG Beckman coulter
- Capsule endoscopy
- Modular OT with Maquet LED lights and Tables
- PACS with central station and mobile viewer

Diagnostic Procedures

- Upper GI Endoscopy
- Colonoscopy
- Capsule endoscopy
- Esophageal Manometry
- 24 hrs PH monitoring
- ERCP
- Choledochoscopy
- Bronchoscopy
- Laparoscopy
- Ultra sonogram
- Echocardiogram
- Treadmill
- ECG
- Fluoroscopy
- Computerized radiography
- PTBD
- Biochemistry
- Hematology
- Immunology
- Microbiology
- Histopathology





Common Surgeries/ Procedures performed

Hepato Biliary

- Liver cancer - RT hepatectomy, Lt Hepatectomy
- End stage liver failure, Cirrhosis - Liver transplantation
- Calculous - Cholecystitis - Lap Cholecystectomy
- Gall bladder cancer-Radical Cholecystectomy
- CBD stones- Lap CBD exploration
- Choledochal cyst excision
- Bile duct injury-Hepatico jejunostomy
- Hepatic trauma surgery
- Liver Cyst - excision
- Drainage of Liver Abscess
- Radio frequency Ablation of Liver tumors

Pancreas

- Pancreatic cancer - Whipple's operation, central & distal pancreatectomy
- Acute Pancreatitis - Drainage, Necrosectomy
- Chronic Pancreatitis-Frey's procedure, pancreatic jejunostomy
- Pseudo cyst-Lap cystogastrostomy/jejunostomy
- Lap splenectomy

Portal Hypertension

- Shunt surgeries
- Devascularization
- TIPPS
- Transplantation



Common Surgeries/ Procedures performed

Gastro intestinal surgery including cancer

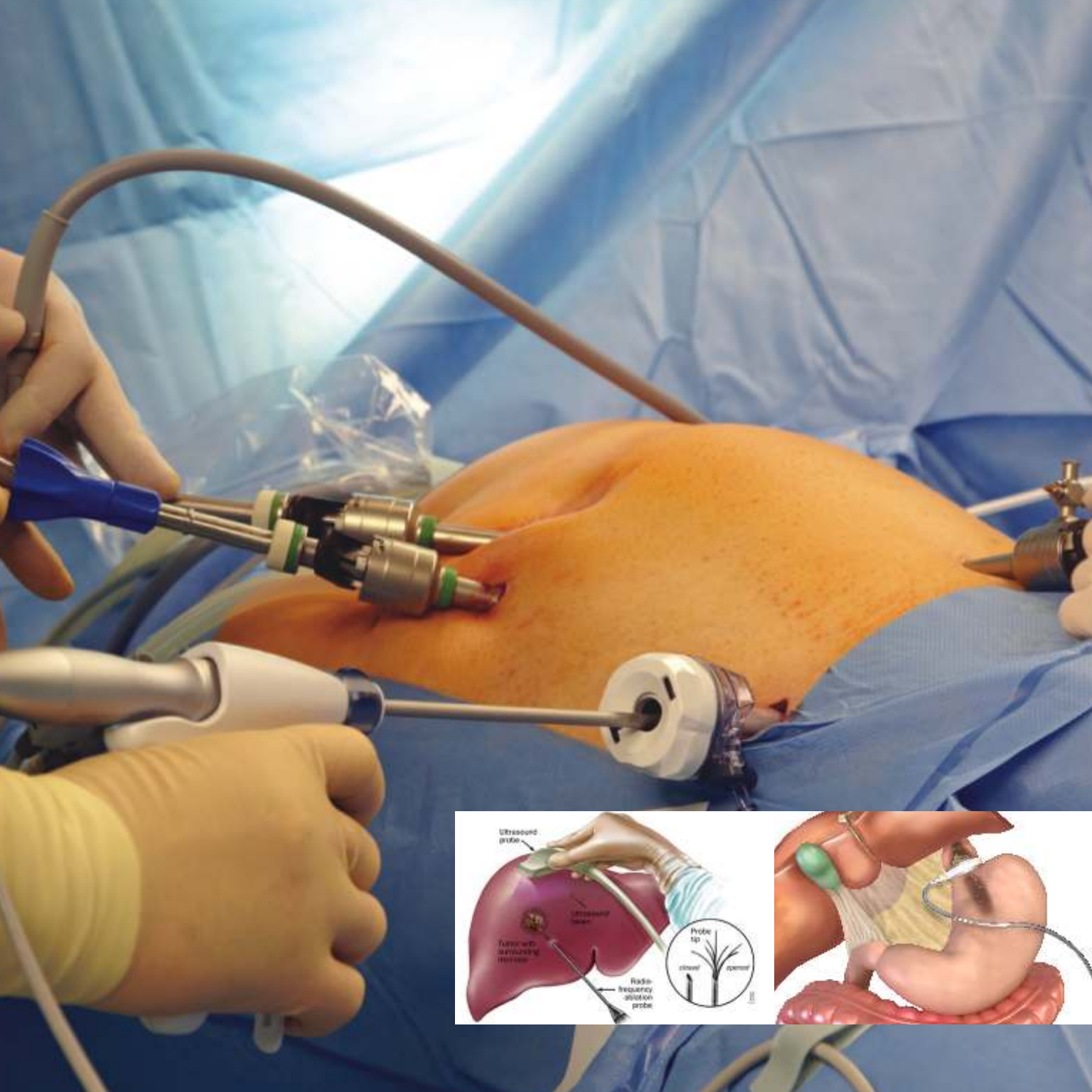
- Esophagus cancer - Esophagectomy -Transhiatal, Transthoracic, Thoracoscopic
- GERD-Lap Antireflux surgery
- Achalasia cardiac-Lap cardiomyotomy
- Stomach cancer - Gastrectomy-Total, partial with D2 lymphadenectomy-open/lap
- Peptic Ulcer-Lap vagotomy/Gastrojejunostomy
- Appendicitis - Lap Appendectomy, notes
- Intestinal cancer, adhesion- intestinal resection, anastomosis
- Enterocutaneous fistula surgery
- Colo rectal cancer- Lap/open
 - Rt, Lt, Total, Abdominal perineal and Low Anterior resections
- Rectal prolapse / lap rectopexy
- Laser/Stapler haemorrhoidectomy
- Complex fistula surgeries

Obesity surgery

- Laparoscopic Gastric Bypass / Banding

Hernia

- Incisional hernia-mesh repairs-lap/open





Obstetrics Services

- Planning for Pregnancy
- Painless Labour
- High-risk pregnancy care
- Mother-infant nursing care
- Labour Rooms equipped with CTG, Resuscitation Units and Vacuum suction

Gynecological Services

- Infertility diagnosis and treatment
- Endometriosis diagnosis and treatment
- Menopause diagnosis and treatment
- Uro gynecology
- Gynec oncology
- Dealing with Premenstrual Syndrome
- Hysterectomy-Lap/non descending vaginal
- Lap Ovarian cystectomy
- Lap Myomectomy
- Wertheim's operation

Neonatology

4-bedded Neonatal Intensive care Unit (NICU) for care of new born babies who are premature, have low birth-weight or suffer from other illnesses is equipped with the following facilities:

- Neonatal Ventilators
- Multi-channel 24 Hours vital monitoring
- Neonatal Incubators and Open Care System
- Latest Double Surface Photo Therapy Units
- Resuscitation Unit
- Incubators
- Invasive Monitors
- Exchange transfusion for Jaundice, Septicemia
- Neonatal ventilation
- Care of low birth babies (<1.5kg)
- High intensity phototherapy for Jaundice